



'THE ULTIMATE IN STOCK HANDLING'

Instruction Manual AND OPERATING GUIDE



Combi Clamp Ltd
112b Kaimanawa Street, Palmerston North 4414
New Zealand

For help with setting up and using your Combi Clamp Sheep Handler call free phone:

New Zealand: 0800 227 228

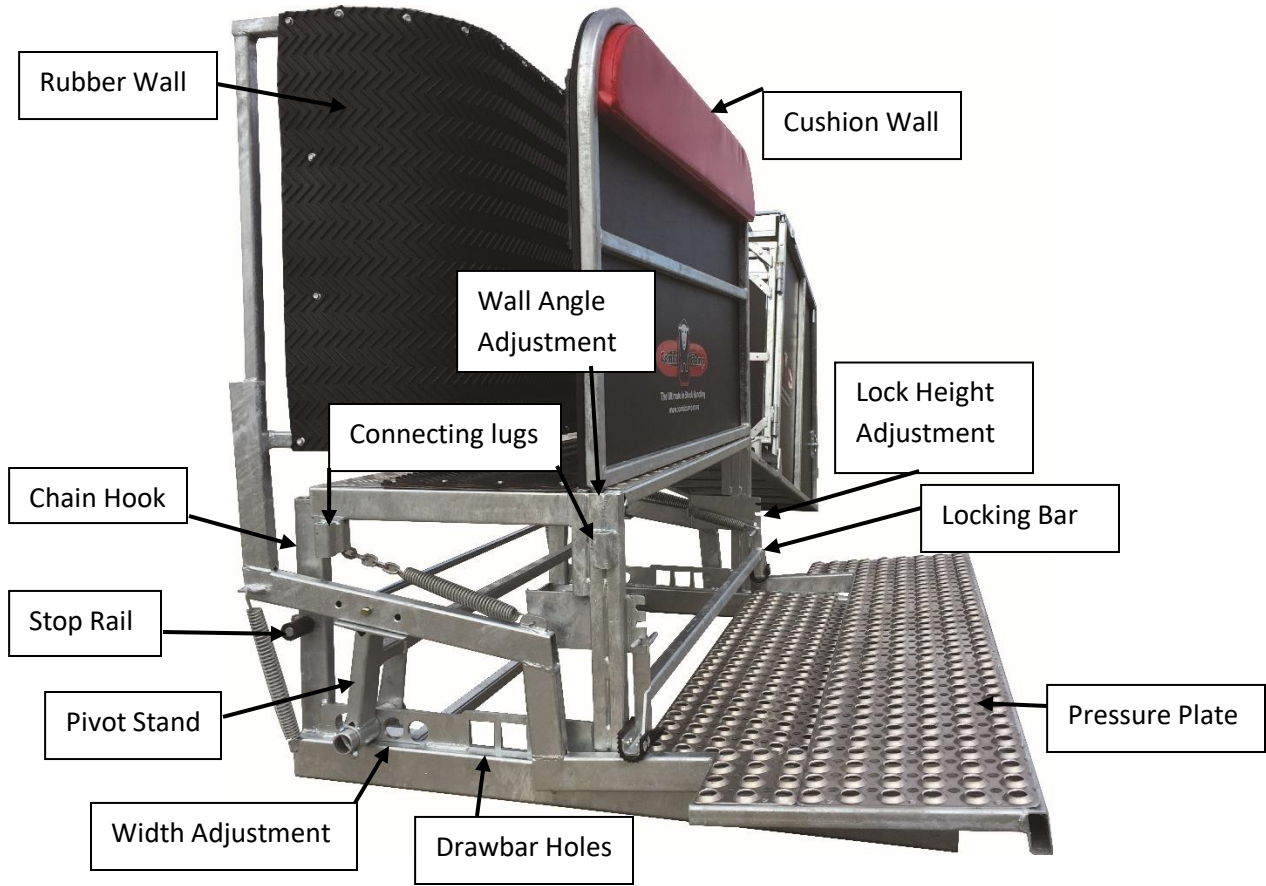
Australia: 1800 449 561

Email: wayne@combiclamp.co.nz

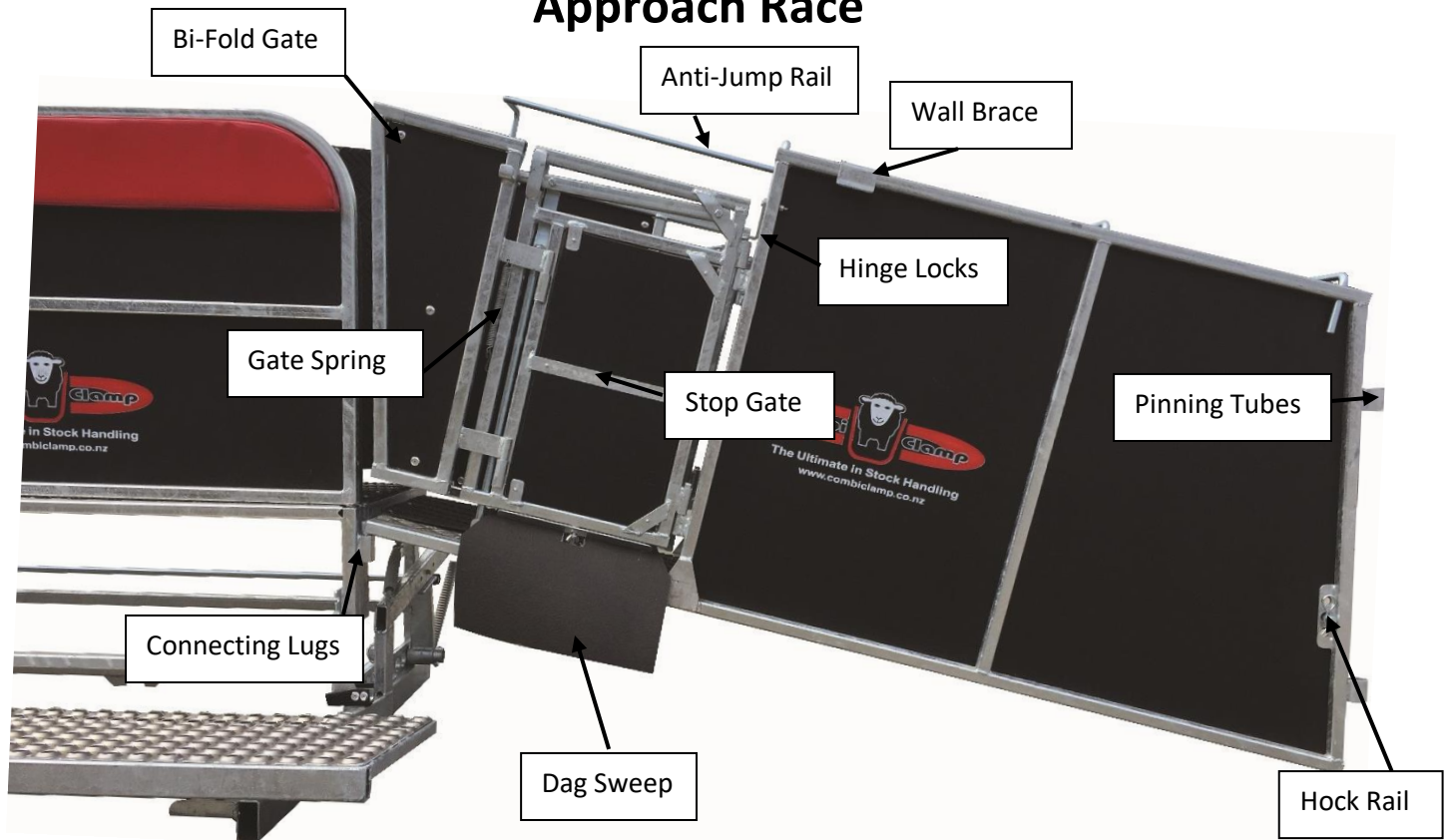
View Videos on Website

www.combiclamp.co.nz

Handler



Approach Race



Setting up your Combi Clamp

Caution: Always wear protective footwear when using the Combi Clamp.

Where best to set up your Combi Clamp:

The success of the Combi Clamp is heavily impacted by the stock flow. Look at your yards and think about where your sheep flow naturally. Do not position the Combi facing directly towards a wall or fence as the sheep will see this as a barrier. By having processed sheep collecting in front of the handler they will naturally draw. If the sheep will be turning to enter the Combi Clamp make sure that the operator is on the inside of the curve. For right-handed operators this means the sheep make a left-hand turn. Typically, ewes run around curves well while lambs prefer a straight race. Other issues can arise with an excessively long single file race.

Moving/Lifting:

Please be careful when moving your Combi Clamp to avoid personal injury. Lock the handler closed using the locking mechanism. Remove significant weight by removing the cushion wall from the handler and the gates from the approach race. Holding onto the lighter end of the race, stand it up and walk it on its corners to maneuver. The handler can be slid around holding the pressure plate or pushing against the end of the rubber wall.

To load the Combi Clamp onto a trailer, tip the handler up onto one end. Back the ute or trailer to approx. 500mm away from the bottom of the handler. Push the handler over to lean on the deck before lifting the other end and sliding the handler on. Place the entry end of the approach race first onto the pressure plate of the handler, lift the other end and slide on. Place the gates back on the race and, ensuring the wall brace is fitted on the race, strop down.

How to set up your Combi Clamp:

Position approach race by removing gates and placing the race at the exit of the single file race. **Position the handler** as close to the end of the approach race as possible. To **connect the race to the handler**, stand astride the approach race (where the gates would usually be), lift the race and place hooks into the connecting lugs on the handler. If not quite lined up properly, place one hook into a lug and drag handler closer until the other hook drops in. If using a **curved race**, position it at the exit of the single file before the approach race. Connect the curves to the approach race after it is connected to the handler. Fit hock rail at the entry to the curves using long pins provided. Just flip the hock rail for height adjustment. **Check what sheep will see** when running through the handler and if you are satisfied that they will run then **replace the gates and cushion wall**. Make sure that the cushion wall is angled with the larger gap at the bum of the sheep and the narrow gap and the front shoulders to create a wedge.

Operating Tips:

While the Combi Clamp can be used **left or right-handed**, they do come set up for right-handed use as standard. Simply turn the handler around so the operator is on the other side of the sheep. The gates also need to be switched on the race with the bi-fold gate also being hinged on the other side of the stop gate. The dag sweep can be rotated simply by loosening off the wing nut.

This **bi-fold gate** can also be removed for **dagging or crutching** to provide a gap to use the handpiece through. Unlatch the bi-fold gate, lift it off its hinges and unhook the spring. Just remember to leave your hand over the gap when changing sheep to avoid them taking on the gap.

Either one or both **anti-jumps rails** should be set forward during operation to avoid sheep jumping out. Have the far anti-jump rail forward when working at the back of the sheep and both anti-jump rails forward when working at the head of the sheep.

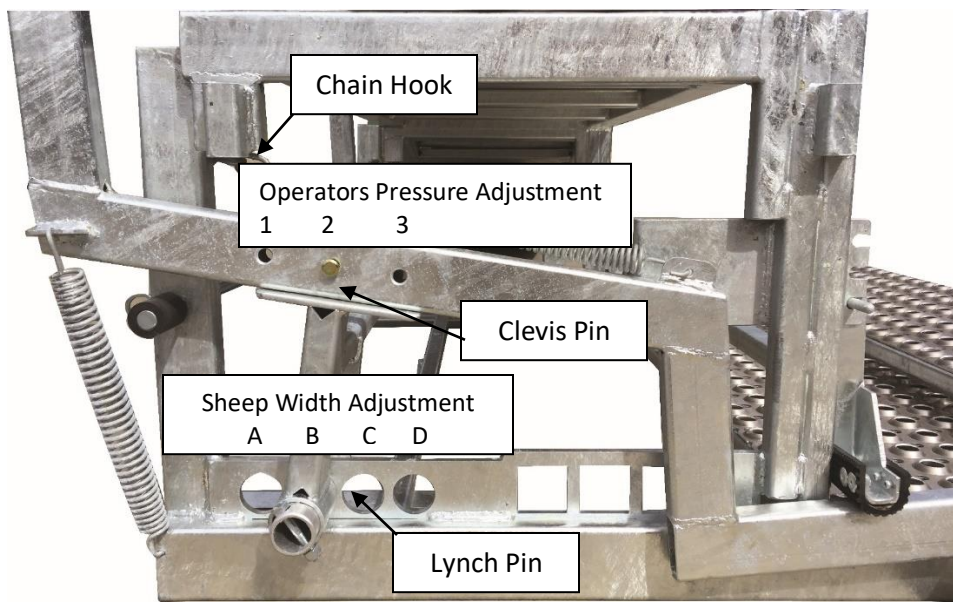
Adjustment for Operator body weight and Sheep size

Factory settings suit the average operator weight (60-80kg) and ewes. Before using your handler, you may need to adjust the pressure to suit the weight of the operator.

If you weigh the same as your ewes, then leave the pressure setting on 2.

If you weigh more than your ewes, then move to pressure setting 3 (less leverage).

If you weigh less than your ewes, then move to pressure setting 1 (more leverage).



To adjust pressure. Raise locking bar, unhook chains from hooks at rear of handler and remove clevis pins from pressure adjustment at each end of handler. Holding the front edge of the pressure plate, slide it backwards or forwards to line up holes and replace clevis pins.

If no width adjustment required: Replace spring chains making sure that there is enough tension to open the clamp but not so much that it bounces.

Width Adjustment: Remove lynch pins at both ends and push tubes out just enough to move the pivot point (hold onto the pressure plate and push or pull). Making sure you are using the same holes at each end, replace the tubes and lynch pins.

General Guidelines:

Light operator:	1 or 2	A, B, C	Rams to Lambs
Heavy operator:	2 or 3	B, C, D	Rams to Lambs

Hints: Ideally you should be catching the average sheep with the pressure plate no lower than 3-5cm above the base plate. This allows for further travel to catch smaller sheep and enough pressure to catch larger sheep. If you are consistently bouncing in mid-air or the pressure plate is bottoming out, you will need to adjust the width. If the sheep are wriggling out even though the pressure plate is at the right height, then you may need to adjust the pressure and width so that you have more leverage.

Weigh Gear Instructions

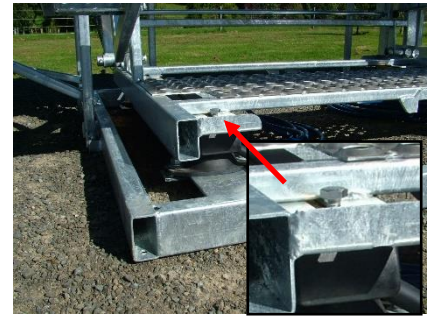


Set handler up in position. Remove gates off approach race then stand up race and draft. Roll handler over onto it's back and position Weigh Frame against the base of the handler, so the Gadget Holder lugs are facing the rear.

Place load bars with cables facing inwards. Position them centered lengthwise and widthwise.



Using bolts with square washers, clamp the load bars to the Weigh Frame with the ridge of the square washer facing outwards. Put on flat washer, spring washer, and nut loosely until checked for squareness and tighten bolts using 18mm and 19mm ring spanner. These load bars can now stay permanently on the Weigh Frame.



Roll the handler over and slide on the load bars until positioned so that all four holes on the top of the load bars line up in the slots. Put bolts in loosely so that you can still slide the handler to line up with the ramp stands.



Put ramps stands in place and secure with rod.

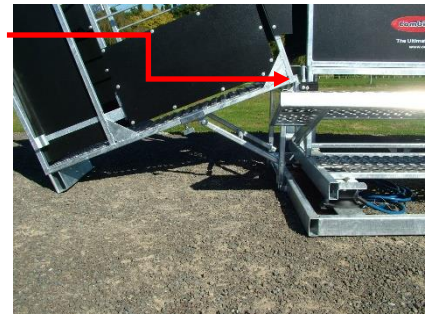
Hook the approach race into ramp stand and move the race so there is a 10mm gap showing.



Lock into position by stretching hand outwards to fit over race floor. Tighten wing nut firmly.

Place draft block under the front of the Draft before positioning Draft on ramp stand and lock into position.

Slide handler backwards or forwards on the load bars to line it up with the entry and exit.



Drop weigh plates into lugs. Long plate at the back and short plate at the front.

If you have a gadget holder, lock into place using large wing nuts.



Place Access Ramp over Weigh Frame. Replace gates on approach race and move either just the far, or both, anti-jump rails forward. Test all gates to make sure they swing clear of the weigh plates.



Shifting: To shift handler without Weigh Gear undo top load bar bolts and slide the handler off the load bars.



Weigh Frame

Access Ramp

Putting the Combi Clamp on Wheels



Remove gates from race. Place wheels in lugs. Long side of axle goes on pressure plate side.



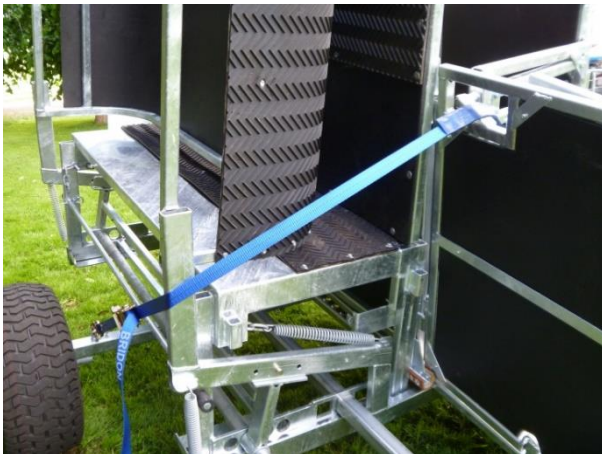
Feed drawbar down through holes.



Pin drawbar to axle.
Pull trailer down onto its wheels.



Using wheel as a pivot point, put the race onto the handler. Make sure the wall brace is in place under the anti-jump rails at the hinge end of race.



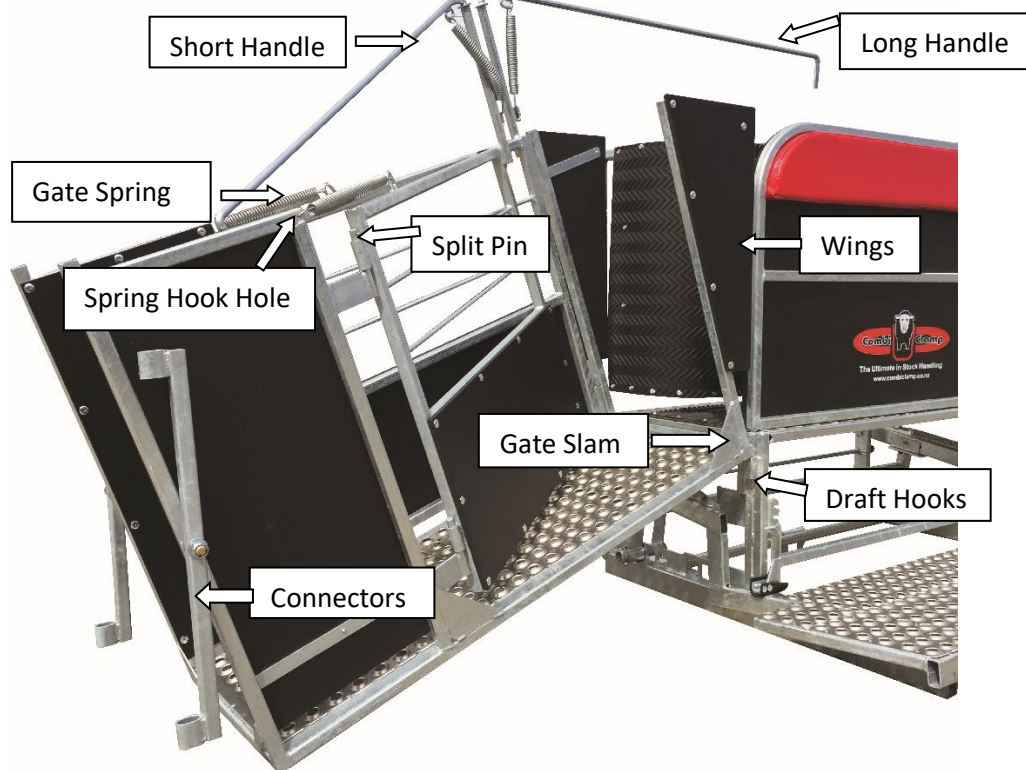
Replace gates, Put tie downs in place. Front strap through the gate handle and ratchet handles at rear of handler.



Ready to go.

(If using a Three-Way Draft, place this upside down over the clamp. Curved races can go upside down in the open clamp, before locking it down and placing the race on.)

Three-Way Draft



Attaching Gates: Plastic cladding and handles go on the outside.

- Whilst holding gate at a right angle to draft base, insert hook on the gate spring into the hole at the top of draft wall.
- Lower gate just slightly onto hinges. Without the gate dropping any lower, swing gate around until the bottom edge clears the gate slam. Insert split pin and bend ends around to keep in place.

Extension Handles:

- Long handle goes on far gate, short handle on near gate.
- Swing draft gate inwards so you can place foot on floor. Insert extension handle spring into chain link welded at front of draft handle. Hold extension handle firmly near the spring and with far end of handle lowered down, insert handle into top of gate handle and lift the other end of the draft handle until it drops into place.
- Repeat for other gate.
- Extension handles can be swung around out of the way. Swing handle around to the outside and hook handle inside draft wall.

Wings:

- These go in, with the plastic cladding on the outside, and straight edge against the gate.
- Remove the near wing when working at the front of the sheep e.g. mouthing, drenching, front feet.
- When using draft on its own, sitting flat on the ground, you will not need the wings.

Portable Yard Connectors:

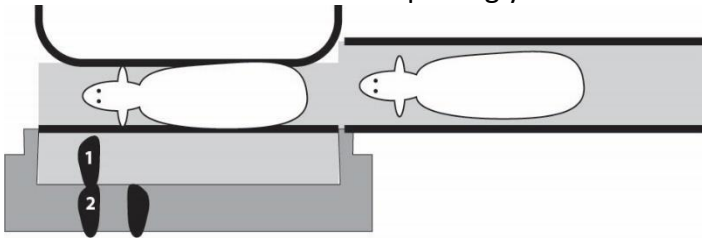
- Swing portable yard connectors around as in photo. Connect to portable yards with a long pin or in permanent yards connect securely to posts.
- Your draft can be attached to the entrance of the approach race for jobs such as drafting lambs off into the tailing pen, and drenching or uddering ewes through the Combi Clamp.

Foot Positions for Operation

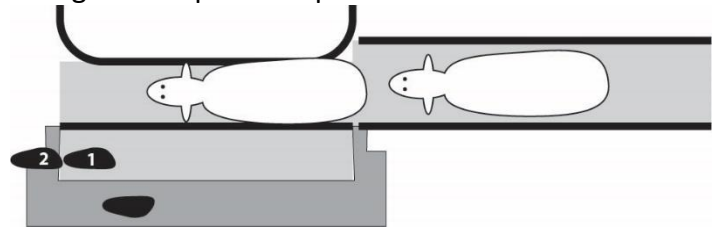
(Reverse Foot and Handler positions for Left Handed Operators)

Caution: Always use solid protective footwear when using your Combi Clamp.

Avoid placing your toes under the edge of the pressure plate.

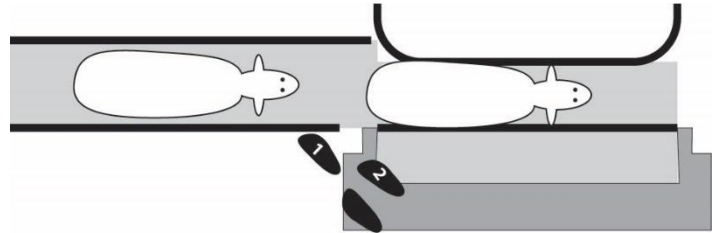
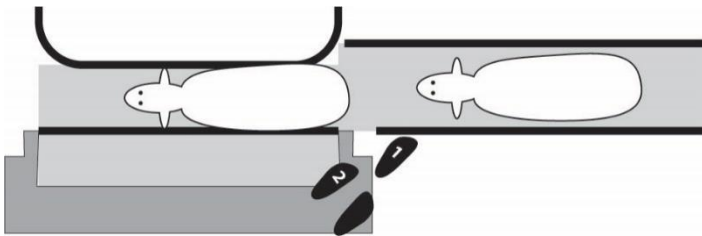


Weighing/Vaccinating/Capsuling With weight on left foot (1) let sheep enter handler. Shift weight to right foot to catch sheep. Once caught, shift left foot onto pressure plate (2) for an even stance. To capsule, place free hand under jaw of sheep. Place the elbow of your applicator arm against the sheep's ear. As you raise head to straighten neck, pop applicator in the side of the mouth and down the throat of the sheep. Release capsule and slide applicator out again. Reload applicator while you release sheep and catch the next one.



Drenching and Mouching (Right Handed)

Remove near wing on draft. Stand facing oncoming sheep with weight on left foot (1). Hide left arm behind yourself as sheep enters. Catch sheep in first half of handler by shifting weight to right foot. Once caught, shift left foot to (2) position, swing arm through front of handler up under the jaw of the sheep. Drench. Left hand moves over top and onto back of sheep. Let sheep go allowing it to carry your left hand until you can hide it again behind yourself through the gap.

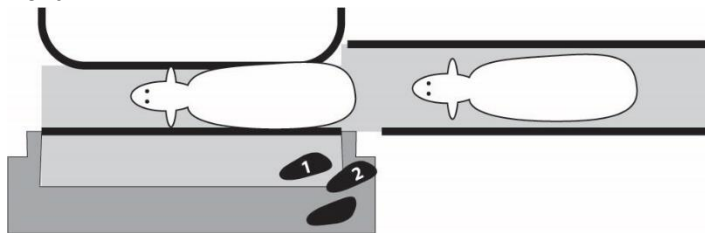


Dagging/Crutching (Right Handed) bi-fold gate removed.

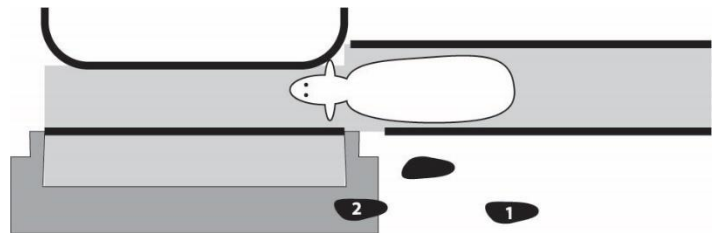
(The handpiece can be left running continuously. No need to turn it off and put it down between each sheep.)

Use this method so that you can step forward to bring sheep into handler.

Stand with the inside foot (1) in front of handler and rest the toes of the outside foot on the edge of the pressure plate. When the sheep enters, shift your weight back onto the outside foot, then step back onto the pressure plate with your inside foot (2). Lean your hip against the cushion and use your free hand on the tail of the sheep to make it stand up. To adjust position of the sheep forward, take a little weight off the pressure plate whilst squeezing the tail. To back sheep up, walk along pressure plate to the front of the sheep. Place your left hand under the jaw of the sheep whilst tapping the pressure plate with your foot so that you keep control of the sheep and adjust in small increments. Reach out with your handpiece to block the gap at the gate whilst you're at the front.



Dagging/Crutching (Left Handed) bi-fold gate removed.



Right Hand Dag

Step forward with inside foot, once sheep is caught.

Remove bi-fold gate when dagging ewes, then you can dag through the gap without closing the stop gate between each sheep.

Leave bi-fold gate on when dagging young lambs. The bi-fold gate can be opened outwards slightly if you do not want to close stop gate.

Chasing Sheep up into Handler

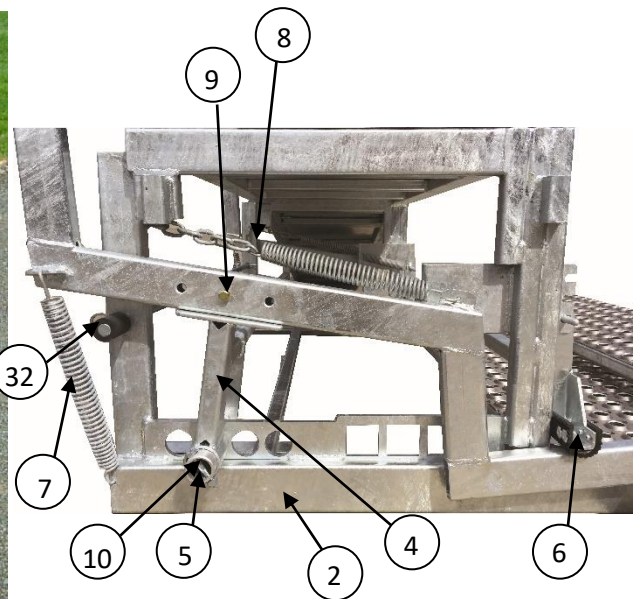
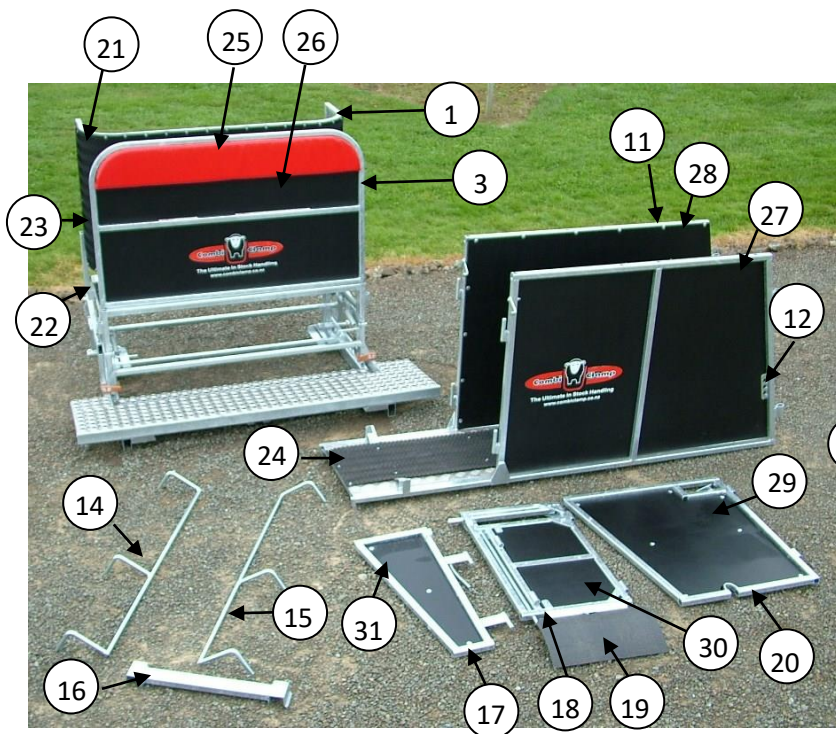
Lock handler closed to avoid the sheep beating you. Walk along behind the sheep with your hand on their tail until they reach the handler. Without taking pressure off the sheep, unlock the handler with your feet and ease the sheep into the handler. Put full weight on the pressure plate once the sheep has reached the ideal position.

Once the sheep is caught put both feet on the pressure plate for an even stance. This will avoid getting a tired leg holding the pressure plate down.

COMPONENTS LIST

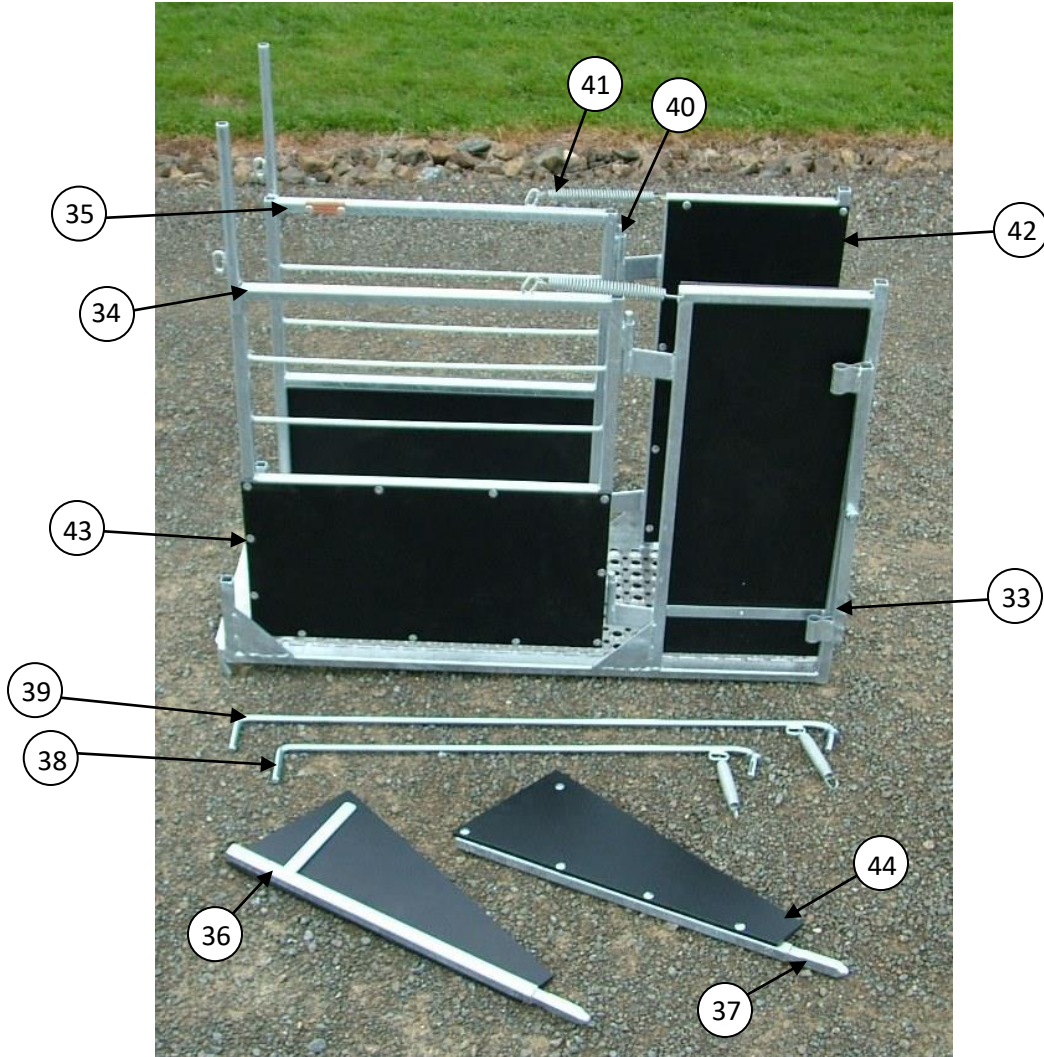
Standard Unit

#	Code	Name	#	Code	Name
1	SU1	Clamp Section	17	SU17	Bi-fold gate
2	SU2	Handler base	18	SU18	Stop Gate
3	SU3	Cushion Wall	19	SU19	Dag Sweep with 10mm wing nut
4	SU4	Pivot stand	20	SU20	Big Gate
5	SU5	Pivot tube (each)	21	SU21	Big Rubber
6	SU6	Locking bar	22	SU22	Handler floor rubber
7	SU7	7" tramp spring (each)	23	SU23	Cushion wall rubber
8	SU8	7" tramp spring with chain (each)	24	SU24	Approach race rubber
9	SU9	clevis pin	25	SU25	Red Cushion
10	SU10	tractor clip	26	SU26	Cushion wall plastic
11	SU11	Approach race	27	SU27LH	Approach race wall plastic - left
12	SU12	hock rail	28	SU28RH	Approach race wall plastic - right
13	SU13	4mm R-clip	29	SU29	Big Gate plastic
14	SU14LH	Anti-jump rail - left	30	SU30	Stop gate plastic
15	SU15RH	Anti-jump rail - right	31	SU31	Bi-fold gate plastic
16	SU16	Wall brace	32	SU32	Stop rail



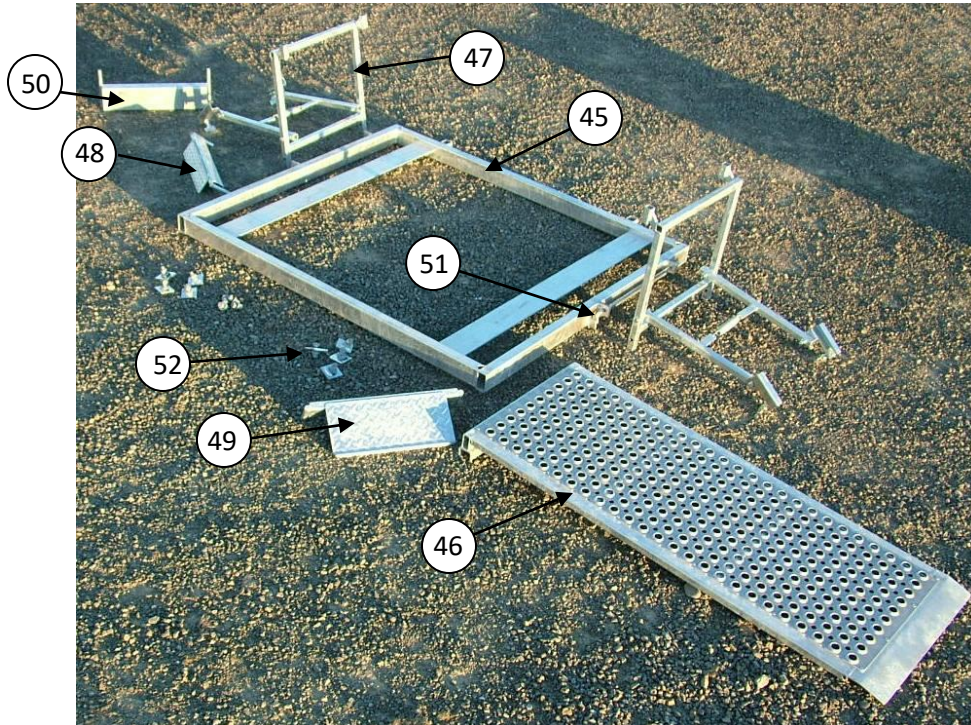
Three Way Draft

#	Code	Name	#	Code	Name
33	3WD1	Draft base	39	3WD7	Handle - long
34	3WD2	Gate - left	40	3WD8	Split pin
35	3WD3	Gate - right	41	3WD9	7" tramp spring (each)
36	3WD4	Wing - left	42	3WD10	Wall plastic (each)
37	3WD5	Wing - right	43	3WD11	Gate plastic (each)
38	3WD6	Handle - short	44	3WD12	Wing plastic (each)



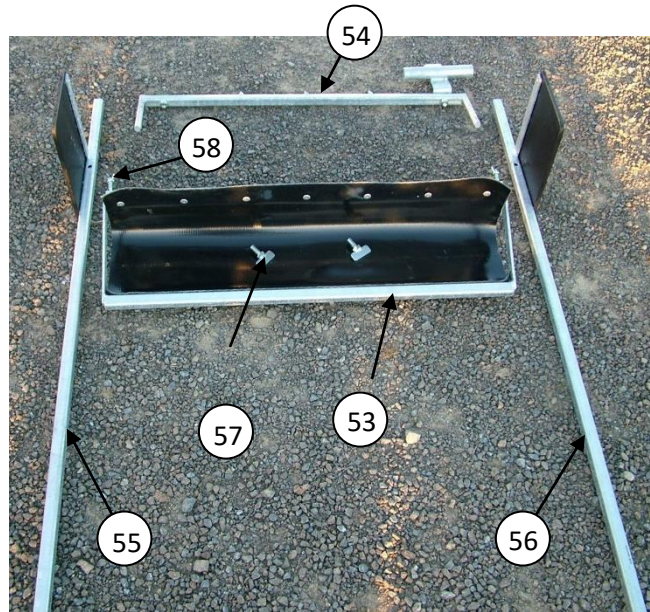
Weigh Gear Attachments

#	Code	Name	#	Code	Name
45	WG1	Base frame	49	WG5	Plate - long
46	WG2	Access Ramp	50	WG6	Draft block
47	WG3	Stand (each)	51	WG7	Stand pins (each)
48	WG4	Plate - short	52	WG8	Fasteners (set)



Gadget Holder

#	Code	Name
53	GH1	Trough
54	GH2	Indicator bar
55	GH3L	Leg - left
56	GH4R	Leg - right
57	GH5	Wing Bolt (each)
58	GH6	Wing Nut (each)



Curves

#	Code	Name
59	CRV1	Small curve
60	CRV2	Large curve
61	CRV3	Hock rail
62	CRV4	Pin (each) 4 per set



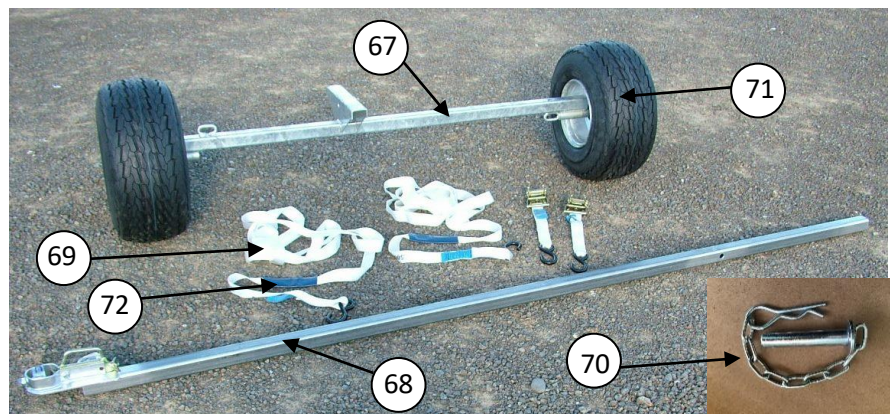
Sheep Anti-Backing Ramp

#	Code	Name
63	SHR1	Ramp
64	SHR2	Stand
65	SHR3	Fasteners (set)
66	SHR4	Rubber



Wheel Attachments

#	Code	Name
67	WHL1	Axle
68	WHL2	Drawbar
69	WHL3	Tie down (each)
70	WHL4	Pin with R-clip
71	WHL5	Rim and Tyre (each)
72	WHL6	Lay Flat (each)



Wool Classing Wall

#	Code	Name
73	WCW1	Rubber (set)

73



Lamb Cushion Wall

#	Code	Name
74	LCW1	Cushion
75	LCW2	Rubber
76	LCW3	Plastic

75

74

76

